

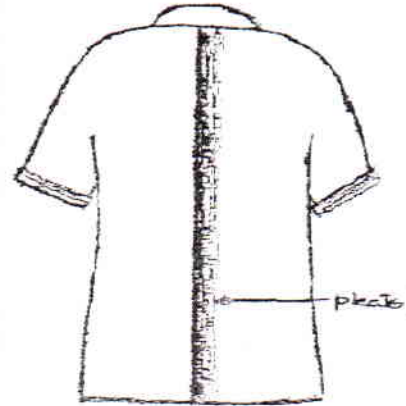
UNIVERSITY OF TECHNOLOGY, JAMAICA

JOINT COLLEGES OF MEDICINE, ORAL HEALTH AND VETERINARY SCIENCES

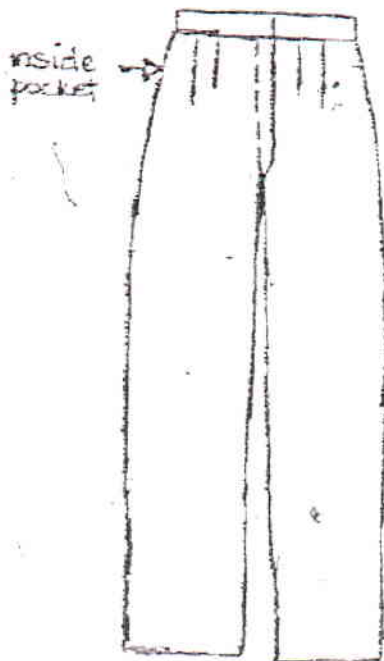
ENVIRONMENTAL HEALTH



Beige Bush Jacket
(front)



Beige Bush Jacket
(back)



Brown Pants
(front)



Brown Skirt
(front)



Brown Skirt
(back)

Online Module Selection and Enrolment Steps

- Step 1: Log on to the university website
www.utechjamaica.edu.jm.
- Step 2: Click on the 'Student Portal' link on the homepage.
- Step 3: Click on link 'Log-in to UTech Portal here'
- Step 4: Enter application/identification number for username and enter your date of birth for your password.
- Step 5: Change your password.
- Step 6: Now on the student home page, click the icon 'Student'.
- Step 7: On the Student Page, click on, 'Select your module', located beneath the student action column.
- Step 8: Make your selection from the *specialized, non-specialization* and electives groups.
- Step 9: 3 Once satisfied, click 'Confirm Selection'.
- Step 10: Select the link 'Click here to view your fees'.
- Step 11: Exit from the system and pay your fees.

Completing Enrolment Procedures

- Step 12: Return to the *Student Portal* after payment of fees
- Step 13: On the homepage go to 'In-tray'
- Step 13a: Click on the message which states, *Click here to enrol*,

Step 14: Complete all 10 steps of the process as instructed in the message.

Step 15: After completing the steps click on 'I Agree' to accept the University's regulations and policies.

You have successfully completed all your online enrolment steps.

Step 16: To print a personalized timetable, go to Student page.

Step 17: Proceed to the Medical Centre to submit your completed medical form or to make arrangements for the medical to be completed by the UTech Practitioner at the Papine Campus. Students can also visit the Western Campus Office to submit their completed medical forms.

Step 18: Boarding applicants for the Papine Campus are asked to visit the Accommodations Unit before proceeding to the Department of Safety and Security to process their identification.

Step 19: Proceed to the Department of Safety and Security, located on the ground floor of the main Administration building at the Papine Campus to process your identification card or at the Campus nearest you.

Step 20: Collect your *Student Handbook* at the Campus nearest to you.

You are now a registered Student of the University.

Module Code	Module Name	Prerequisite/Co-requisite (if any)	CREDITS	Results
Semester 1				
COM1020	Academic Writing I	COM0001/ I-English A	3	
MAT1044	College Mathematics IA		4	
INT1001	Information Technology		3	
CSP1001	Community Service Project		1	
CHY2021	General Chemistry I		3	
CHY2022	General Chemistry Practical I		1	
HEA2004	Socio-Cultural Factors in Health & Disease		2	
Semester 2				
CHY2023	General Chemistry II		3	
CHY2024	General Chemistry Practical II		1	
BIO1001	General Biology		4	
PHS1004	Environmental Health Physics		4	
HEA1036	Health Information System		3	
HEA1002	Foundations of Public Health		3	
Semester 3				
COM2014	Academic Writing II	COM1020(P)	3	
	Entrepreneurial Skills		3	
COT2001	Building Construction Technology	MAT1044 (P)	4	
MIB2001	General Microbiology		3	
HEA2005	Health Legislation		4	
PSY1002	Introduction to Psychology		3	

Module Code	Module Name	Prerequisite/Co-requisite (if any)	CREDITS	Results
Semester 4				
ENH2002	Solid Waste Water Management		4	
EPI2003	Epidemiology & Disease Control		3	
HEA2002	Health Promotion		3	
HEA2003	Health Policy Planning & Evaluation		3	
	University Electives		3	
ENH2001	Pollution Control		3	
Semester 5				
EPI3003	Epidemiology & Disease Control II		3	
ENH3003	Water Technology		3	
ENH3004	Liquid Waste Management		4	
STA3001	Biostatistics	MAT1044 (P)	3	
RES3001	Research Methodology		3	
Semester 6				
MIB3001	Food Microbiology	MIB2001 (P)	4	
ENH3002	Vector Control	BIO1001 (P)	3	
OHS3001	Occupational Health & Safety	MAT1044 BIO1001 (P)	3	
ENH3005	Meat Hygiene	MIB2001 (P)	4	
HEA4012	Public Health Practice in Community Development	HEA2002	4	